



# LITITZ CHRISTIAN SCHOOL

2021 – 2022

## Academic Programming Guide

Updated 03.18.2021

## MISSION STATEMENT

Lititz Christian School partners with Christian families to provide a biblical, academic education which prepares students to honor Jesus Christ in scholarship, vocation, and lifestyle.

## VISION

Our vision is to enrich curricula and experiential opportunities for those whom God sends us, and to maintain a level of excellence that honors Jesus Christ.

*Equipping Minds, Enriching Souls, Empowering Lives*

## EXPECTED STUDENT OUTCOMES

Social	A student will exhibit respect for all people, regardless of gender, race, religion, etc., recognizing the inherent value of each person as an image-bearer of the Creator.
Spiritual	A student will be able to articulate and defend the foundational tenets of a Biblical worldview based on a well-developed knowledge of scripture, as well as understand other belief systems present in the world today.
Intellectual	A student will be an articulate communicator – both verbally and through writing – of the knowledge present in a general education and the application of that knowledge; able to form and support ideas and arguments, and to engage articulately and respectfully in the exchange of ideas with others.
Vocational	A student will develop a positive work ethic and cultivate the skills of studying, investigating, problem-solving, and decision-making.
Physical	A student will understand the value of a pure and healthy lifestyle for the body, the mind, and the spirit.
Emotional	A student will possess an understanding of his/her gifting, abilities, strengths, weaknesses, value, and identity as an image-bearer of Christ.

## TABLE OF CONTENTS

Purpose of the Academic Programming Guide	5
Graduation Requirements	5
Community Service	6
Dual Enrollment and Advanced Placement	7
Career and Technology Center	7
Career Pathways	8
Grading System	9
Suggested Freshman Courses	9
Suggested Sophomore Courses	10
Suggested Junior Courses	11
Suggested Senior Courses	12
How to Understand Course Descriptions	13
Course Descriptions	13
✓ Bible	13
✓ Business	15
✓ English and Education	17
✓ English Language Learners	21
✓ Fine Arts	22
✓ Mathematics	24
✓ Physical Education, Health and Wellness	28
✓ Science	29

✓ Social Studies	32
✓ Technology Education	35
✓ World Languages	37
✓ Additional Courses	39
Contact Information	40

## PURPOSE OF THE ACADEMIC PROGRAMMING GUIDE

The purpose of this guide is to provide students, parents, and staff with an understanding of the guidelines, policies, and expectations regarding courses offered by Lititz Christian School. This guide is designed to provide sufficient information to help students and parents plan their high school learning experience, giving consideration to both future educational and career goals.

The LC Academic Programming Guide is distributed each spring to kick-off the course selection process for the following school year. Lititz Christian School reserves the right to alter course offerings each year based on the needs and interests of our student body. These decisions are made as the schedule requests are reviewed, then communicated to students, parents, and staff.

## GRADUATION REQUIREMENTS

The Lititz Christian School Program of Study provides the credits required to secure a high school diploma in the state of Pennsylvania, as well as opportunities to demonstrate their postsecondary readiness in a variety of ways.

<i>Department</i>	<i>Credits</i>
Bible	4.0
English	4.0
Social Studies	4.0
Science*	3.0 or 4.0
Mathematics*	3.0 or 4.0
Foreign Language	2.0
Physical Education	0.75
Health	0.25
Electives + SenPro	4.0

\*All Students are required to have a minimum combined total of 7.0 credits of Math and Science.

\*\*Global Perspectives, Financial Literacy, Psychology and SenPro are required for all students.

\*\*\*Students enrolled in an approved CTC half-day or full-day program may have modified Bible, Physical Education and SenPro requirements.

## COMMUNITY SERVICE

Service is an integral part of the educational process at Lititz Christian School. To foster the proclamation of the Gospel, and to form good habits of service to others, the **Community Service Program** has been established for all students. The **Community Service Program** is being promoted with two goals in mind: first, to help fulfill the needs of many community and civic organizations as well as churches who rely on volunteer hours to accomplish many of their own goals, and second, to give **ALL** students at Lititz Christian School an opportunity to be **OF SERVICE** to the community.

### **REQUIREMENTS:**

Each senior high student, as approved by Lititz Christian School Board of Education policy, will be required to perform **20 hours** of non-remunerated (no salary or wages) service to school, church, or community per year. Accredited service must be performed at an approved location or have the approval of the Principal. (See list of approved locations) Family services such as mowing the lawn or baby-sitting are family obligations and will not be accredited as community service. Students may begin accruing hours effective the first day of summer vacation. **All hours must be completed by May 15 of the following school year. For seniors, 10 hours must be completed by the end of the first semester of their senior year, and the remaining 10 hours must be completed by the end of the third marking period.** Since this is a graduation requirement, diplomas will be withheld until service hours are completed. Students may volunteer for more than 20 hours of service per year if they wish (they are encouraged to do so) but additional hours may NOT be applied to the next school year. Students who accumulate less than 20 hours must complete the non-served hours the following year.

### **BASIC REQUIREMENTS:**

1. Complete all service hours required.
2. Submit documentation of service with proper signatures. (Forms are included in this booklet or can be obtained at the school office, the Principal, or class sponsors. **Proper forms ONLY will be accepted.**)
  - Hours completed during the summer must be reported by **September 30** of the school year following the summer the service hours were performed.
  - Hours completed during the school year must be reported **within 30 days** of the completion of the service or it **WILL NOT** be accepted.
  - **All service hours must be completed by May 15. Senior hours must be completed by the end of the third marking period.**
3. Submit reflection page of services performed when documentation form is completed. (Forms are included in this booklet or can be obtained at the school office or from the Principal. **Proper forms ONLY will be accepted.**)

## DUAL ENROLLMENT & ADVANCED PLACEMENT

Dual enrollment or dual credit courses are an excellent way for 11<sup>th</sup> and 12<sup>th</sup> grade students to earn college credit while meeting the requirements for earning a high school diploma. There are multiple Dual Enrollment courses offered on campus, taught by members of the LC faculty. Courses taught on campus receive credit through Lancaster Bible College, and cost \$95 per course. Students also have the ability to take classes through Harrisburg Area Community College and receive dual credit. (See the LC counseling office for more information on courses available.) Dual Enrollment courses receive a GPA weight of 1.1.

Advanced Placement courses consist of a culminating exam (or portfolio for Studio Design: 2D) that is graded by an outside organization. The results of the exam determine whether a student can be exempted from 1 semester of that class (or its equivalent) in college. Many colleges accept a grade of 3, 4, or 5 on an AP exam for college credit; some accept only a 4 or 5; some colleges do not accept the AP exam for credit. If your student is interested in a specific college or university, ask that institution what their policy is for their acceptance of AP exam scores for credit. Students enrolled in AP courses are expected to take the AP exam in the spring. The cost to take the exam is \$95. (See course prerequisites in the course descriptions provided in this guide.) Advanced Placement courses receive a GPA weight of 1.2.

## CAREER AND TECHNOLOGY CENTER

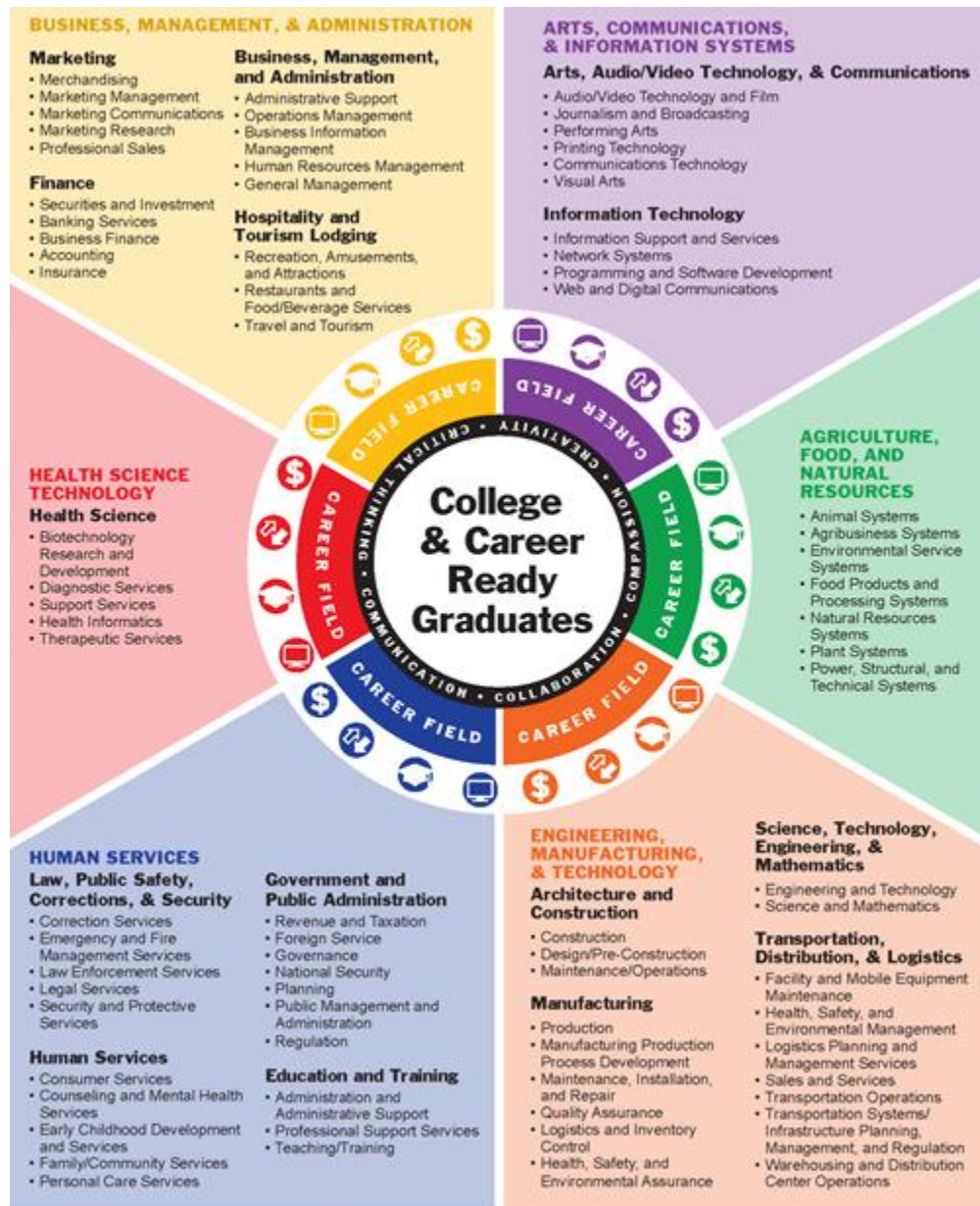
Lititz Christian is pleased to partner with the Lancaster County Career and Technology Center to provide additional learning opportunities for students interested in a variety of careers. These programs provide specific training in a field of interest, allowing students to earn required certifications to work in the field.

The application process for CTC typically occurs in January of students' sophomore and junior years. Interested students should schedule time to meet with an LC counselor to determine if this program is a good fit. Students have the option to participate in half-day and full day programs beginning their junior year of high school. Students interested in the half-day program would attend both Lititz Christian School and CTC each day. The half-day program allows students to participate in courses that provide an introduction to the course of study they would experience as a full-day CTC student. CTC program offerings are listed below. See [www.lancasterctc.edu](http://www.lancasterctc.edu) for the most current programming information.

Advanced Health Careers	Health Care Center
Advanced Manufacturing Center	Information Technology Center
Agriscience Center	Protective Services Center
Construction Technologies Center	Visual Communications Center
Culinary Arts Center	

## CAREER PATHWAYS

Lititz Christian School partners with students and parents to identify the needs, gifts, and goals of students so as to educate the whole student, providing academic rigor, college and career planning, and opportunity for growth and empowerment to, above all, bring glory to their Creator. An assortment of courses are available to provide exposure to a variety of college programs and career fields of interest.



*Adapted with permission from the Minnesota Department of Education, Career Fields, Clusters & Pathways, Information Sheet, 2016*



## GRADING SYSTEM

A+ 100 – 96.5%	B+ 89 – 86.5%	C+ 79 – 76.5%	D+ 69 – 66.5%	F 59% and below
A 96 – 92.5%	B 86 – 82.5%	C 76 – 72.5%	D 66 – 62.5%	
A- 92 – 89.5%	B- 82 – 79.5%	C- 72 – 69.5%	D- 62 – 59.5%	

## SUGGESTED FRESHMAN COURSES

Here are a few things to keep in mind when selecting courses for freshmen year:

1. Credits Required: Student schedules must include at least 7 credits.

Required Courses (6.75 Credits)	Additional Course Options
Art 9 and Computer Survey (full year, .5 credit)	Choir (full year, .5 credit)
Bible (full year, 1 credit)	Worship Arts (full year, .5 credit)
English (full year, 1 credit)	Yearbook (full year, .5 credit)
Mathematics (full year, 1 credit)	
Physical Education (full year, .25 credit)	
Science (full year, 1 credit)	
Social Studies (full year, 1 credit)	
World Language (full year, 1 credit)	

2. Instructor Input: Eighth grade teachers recommend students for the core classes (English, Mathematics, and Science) based on student performance in middle school. If you have questions, or would like to be considered for a different course, please see your instructor or school counselor.
3. World Languages: Spanish and French are the language options available at Lititz Christian. Students typically continue with the foreign language studied in middle school. See your school counselor with any questions.
4. Electives: Physical Education is a required freshman course as well as a PA graduation requirement.
5. 4-Year Plan: This is the time to establish a four-year plan with your school counselor based on student interests and course offerings. This is especially critical if students are considering attending CTC junior and senior years. This plan will be used during the course selection process, and planning related to courses offered on an annual basis.

## SUGGESTED SOPHOMORE COURSES

Here are a few things to keep in mind when selecting courses for sophomore year:

1. Credits Required: Student schedules must include between 6 and 7 credits.

Required Courses (6.75 Credits)	Additional Course Options
Art 10 and Digital Design (full year, .5 credit)	Choir (full year, .5 credit)
Bible (full year, 1 credit)	Worship Arts (full year, .5 credit)
English (full year, 1 credit)	Yearbook (full year, .5 credit)
Mathematics (full year, 1 credit)	
Physical Education (full year, .25 credit)	
Science (full year, 1 credit)	
Social Studies (full year, 1 credit)	
World Language (full year, 1 credit)	

2. Instructor Input: Instructors recommend the placement of students in core classes (English, Mathematics, and Science) based on student performance freshman year. There may also be prerequisite requirements for specific courses offered. If you have questions, or would like to be considered for a different course, please see your instructor or school counselor.
3. World Languages: Continued study of foreign language is essential as Pennsylvania requires 2 credits for high school graduation. Spanish and French are the language options available at Lititz Christian. See your school counselor with any questions.
4. Electives: Physical Education is a required sophomore course as well as a PA graduation requirement. Please keep in mind that students are required to earn 4 Elective credits for graduation – 3.5 credits of the student's choosing, and .5 credit for SenPro.
5. 4-Year Plan: We continue to consult each student's four-year plan created with your school counselor based on interests and course offerings. This is especially critical if students are considering attending CTC junior and senior years. This plan will be used during the course selection process, and planning related to courses offered on an annual basis.
6. Career Technology Center: Sophomore students considering attending CTC junior year should consult with a counselor to ensure the course selections meet program entrance recommendations. Students typically apply to CTC during the winter months of sophomore year. Additional information about CTC programs are available in this guide, and at [www.lccctc.org](http://www.lccctc.org).

## SUGGESTED JUNIOR COURSES

Here are a few things to keep in mind when selecting courses for junior year:

1. Credits Required: Student schedules must include between 6 and 7 credits.

Required Courses (6 Credits)	Additional Course Options
Bible (full year, 1 credit)	AP Studio Art (full year, 1.2 credit)
English* (full year, 1 credit)	AP Computer Science (full year, 1.2 credit)
Financial Literacy (full year, .5 credit)	Business & Personal Law (semester, .5 credit)
Health (full year, .5 credit)	Choir (full year, .5 credit)
Mathematics (full year, 1 credit)	CTC Half-Day (full year, 3.5 credit)
Science (full year, 1 credit)	DC Intro to Business (semester, 1.1 credit)
Social Studies* (full year, 1 credit)	World Language (full year, 1 credit)
	Worship Arts (full year, .5 credit)
	Yearbook (full year, .5 credit)

*\*Students have the option to take Dual Credit English and Social Studies courses, earning both high school and college credit. These are semester courses, each awarding 1.1 credit upon successful completion.*

2. Instructor Input: Students are encouraged to work with instructors to determine the appropriate selection of core classes (English, Mathematics, and Science). Some courses have prerequisite requirements that must be met sophomore year.
3. World Languages: Continued study of foreign language is essential for students planning to attend a college or university. It is important to consider the foreign language expectations for the university and program of interest. Students are not required to take additional world language courses to meet PA graduation requirements.
4. Electives: Health is PA graduation requirement. Please keep in mind that students are required to earn 4 Elective credits for graduation – 3.5 credits of the student’s choosing, and .5 credit for SenPro.
5. 4-Year Plan: We continue to consult each student’s four-year plan created with your school counselor based on interests and course offerings. This plan will be used during the course selection process, and planning related to plans after graduation.
6. Career Technology Center: Junior students considering attending CTC senior year should consult with a counselor to ensure the course selections meet program entrance recommendations. Students typically apply to CTC during the winter months of junior year. Additional information about CTC programs are available in this guide, and at [www.lancasterctc.edu](http://www.lancasterctc.edu).
7. Dual Enrollment: Students are eligible for courses earning dual credit - both high school graduation and college-level credit during junior and senior years. While several dual credit courses are listed in this planning guide, additional course offered by our secondary school partners. See your counselor with questions or suggestions.

## SUGGESTED SENIOR COURSES

Here are a few things to keep in mind when selecting courses for senior year:

1. Credits Required: Student schedules must include between 6 and 7 credits.

Required Courses (6.25 Credits)	Additional Course Options
Bible (full year, 1 credit)	AP Studio Art (full year, 1.2 credit)
English** (full year, 1 credit)	AP Computer Science (full year, 1.2 credit)
Mathematics (or Science*) (full year, 1 credit)	Business and Personal Law (semester, .5 credit)
Physical Education (full year, .25 credit)	Ceramics (full year, .5 credit)
Psychology (full year, .5 credit)	Choir (full year, .5 credit)
Science (or Mathematics*) (full year, 1 credit)	CTC Half-Day (full year, 3.5 credit)
Social Studies** (full year, 1 credit)	CTC Full Day (full year, 7 credit)
SenPro (full year, .5 credit)	DC Intro to Business (semester, 1.1 credit)
	World Language (full year, 1 credit)
	Worship Arts (full year, .5 credit)
	Yearbook (full year, .5 credit)

*\*All Students are required to earn a minimum combined total of 7.0 credits of Math and Science.*

*\*\*Students have the option to take Dual Credit English and Social Studies courses, earning both high school and college credit. These are semester courses, each awarding 1.1 credit upon successful completion.*

2. Instructor Input: Students are encouraged to work with instructors to determine the appropriate selection of core classes (English, Mathematics, and Science). Some courses have prerequisite requirements that must be met sophomore year.
3. World Languages: Continued study of foreign language is essential for students planning to attend a college or university. It is important to consider the foreign language expectations for the university and program of interest. Students are not required to take additional world language courses to meet PA graduation requirements.
4. Electives: Physical Education is a required senior course as well as a PA graduation requirement. Please keep in mind that students are required to earn 4 Elective credits for graduation – 3.5 credits of the student’s choosing, and .5 credit for SenPro.
5. 4-Year Plan: We continue to consult each student’s four-year plan created with your school counselor based on interests and course offerings. This plan will be used during the course selection process, and planning related to plans after graduation.
6. Career Technology Center: Junior students considering attending CTC senior year should consult with a counselor to ensure the course selections meet program entrance recommendations. Students typically apply to CTC during the winter months of junior year. Additional information about CTC programs are available in this guide, and at [www.lancasterctc.edu](http://www.lancasterctc.edu).
7. Dual Enrollment: Students are eligible for courses earning dual credit - both high school graduation and college-level credit during junior and senior years. While several dual credit courses are listed in this planning guide, additional course offered by our secondary school partners. See your counselor with questions or suggestions.

## HOW TO UNDERSTAND COURSE DESCRIPTIONS

Below you will find details on how to understand some of the information provided on each course description included in the pages that follow. This information is important to determine student eligibility and the credit value for each course offered.

<b>Classification:</b>	Course classifications include General Education, Dual Credit and Advanced Placement.
<b>Course ID:</b>	The course ID is used for school purposes only.
<b>Grade Level:</b>	Student grade level eligible for this course.
<b>Credits:</b>	Credit earned after successful completion of the course.
<b>GPA Weight:</b>	Course weight determined by the course classification.
<b>Elective:</b>	Identifies if the class earns an elective credit.
<b>Fees:</b>	Lists any fees related to the course, if applicable.
<b>Length:</b>	Indicates whether the course is a semester or full year course.
<b>Prerequisites:</b>	Lists any prerequisites required for the course, typically the successful completion of coursework prior to the one described.

The listing of a specific course in this guide does not guarantee that it will be taught each school year. Administration determines the annual course offerings based on student needs and interests, and available staffing. The ultimate goal is to ensure LC students have access to their courses of interest, either on campus or through one of our post-secondary school partners.

## COURSE DESCRIPTIONS

### BIBLE

#### **APOLOGETICS AND WORLD RELIGIONS**

<b>Classification:</b> GE	This course will compare Christianity to a number of prevalent philosophies and religions in our culture today. How do we prove that absolutes exist? What is the origin and purpose of mankind? How do we believe in God with so much evil and suffering in this world? An in-depth study of Islam, Buddhism, and Hinduism will occur during the second semester.
<b>Course ID:</b> BIB12	
<b>Grade Level:</b> 12	
<b>Credits:</b> 1	
<b>GPA Weight:</b> 1	
<b>Elective:</b> No	
<b>Fees:</b> None	
<b>Length:</b> Full Year	
<b>Prerequisites:</b> None	

## DOCTRINE AND ETHICS

Classification: GE  
 Course ID: BIB11  
 Grade Level: 11  
 Credits: 1  
 GPA Weight: 1  
 Elective: No  
 Fees: None  
 Length: Full Year  
 Prerequisites: None

We will look at basic doctrines of the Christian Church – God, Christ, the Holy Spirit, Salvation and the Church. In our Ethics class, we will work through the norms of ethical behavior for Christians and the process of moral decision-making.

## GOSPEL FOUNDATIONS

Classification: GE  
 Course ID: TBD  
 Grade Level: 9, 10, 11, 12  
 Credits: 1  
 GPA Weight: 1  
 Elective: No  
 Fees: None  
 Length: Full Year  
 Prerequisites: None

The Gospel Foundations course tells the story of God’s plan to redeem sinners through the death and resurrection of Jesus Christ. From the creators of The Gospel Project, Gospel Foundations is a comprehensive yet concise, Christ-centered journey through the storyline of Scripture from Genesis through Revelation. This course will help students understand how various passages fit into the storyline of Scripture, and develop the tools needed to share the Gospel with others.

## HERMENEUTICS

Classification: GE  
 Course ID: BIB10  
 Grade Level: 10  
 Credits: 1  
 GPA Weight: 1  
 Elective: No  
 Fees: None  
 Length: Full Year  
 Prerequisites: None

This course will involve a project-oriented study on Bible study principles through the text, *Living by the Book* by Howard Hendricks. This course will provide an excellent foundation for students in their daily, personal time in the Scriptures, as well as the tools for further in-depth study in the 11<sup>th</sup> and 12<sup>th</sup> grades.

## KINGS OF ISRAEL

Classification: GE  
 Course ID: KINGS  
 Grade Level: 11, 12  
 Credits: 1  
 GPA Weight: 1  
 Elective: Yes  
 Fees: None  
 Length: Full Year  
 Prerequisites: None

This course will examine, in chronological order, the kings of Israel and Judah, beginning with the three rulers of the United Kingdom in Saul, David, and Solomon, and continuing with the rulers of the northern and southern kingdoms. We will also incorporate some historical details of the surrounding nations and their cultural and religious influences on the Jewish people. If time permits, we will take a brief look at the Hasmonean dynasty, which ruled during the 2<sup>nd</sup> century before Christ.

## **NEW TESTAMENT SURVEY**

Classification: GE  
 Course ID: BIB9  
 Grade Level: 9  
 Credits: 1  
 GPA Weight: 1  
 Elective: No  
 Fees: None  
 Length: Full Year  
 Prerequisites: None

This portion of New Testament Survey specifically looks at the epistles and the book of Revelation. Epistles written by Paul, Peter, James, and John will be studied, as well as a look at future things.

*The course description for ESL Bible is located in the English Language Learner section of this guide.*

## **BUSINESS**

### **BUSINESS AND PERSONAL LAW**

Classification: GE  
 Course ID: BUS-LAW  
 Grade Level: 11, 12  
 Credits: 0.5  
 GPA Weight: 1  
 Elective: Yes  
 Fees: None  
 Length: Semester  
 Prerequisites: None

This course examines how the law affects young adults and consumers, and evaluates a citizen's role in the United States' legal system. Students will learn concepts pertaining to the court system, entering into contracts, criminal law, consumer law, and family law matters.

### **ECONOMICS**

Classification: GE  
 Course ID: BUS204  
 Grade Level: 11, 12  
 Credits: 0.5  
 GPA Weight: 1  
 Elective: Yes  
 Fees: None  
 Length: Semester  
 Prerequisites: None

This course serves as an introduction to the basic tools of micro- and macroeconomic analysis. Microeconomics deals with consumers, firms, markets and income distribution. Macroeconomics deals with national income, employment, inflation and money. Students will learn foundational concepts of economics with a focus on practical application. After gaining an understanding of the interplay between these concepts, students will design and defend their own perspective on the ideal economy.

## ENTREPRENEURSHIP

Classification: GE  
 Course ID: BUS306  
 Grade Level: 11, 12  
 Credits: 0.5  
 GPA Weight: 1  
 Elective: Yes  
 Fees: None  
 Length: Semester  
 Prerequisites: None

This is a practical hands-on business course designed for students interested in starting their own business and/or working for a small business. The course focuses on the steps necessary to create, maintain, modify, and market the new business from an entrepreneurial perspective. Students will develop a business plan, find ways to secure financing, learn a variety of marketing and customer relationship management techniques, as well as the value of developing a mentioning relationship.

## INTRODUCTION TO BUSINESS

Classification: DC  
 Course ID: BUS102  
 Grade Level: 11, 12  
 Credits: 0.5  
 GPA Weight: 1.1  
 Elective: Yes  
 Fees: \$95 (optional)  
 Length: Semester  
 Prerequisites: None

This introductory course investigates the role business plays in society, the importance of integrating a career in business with ministry, and examines the various functional areas of a business to enable students to understand areas of personal interest and possible future career options.

## SPORTS AND ENTERTAINMENT MARKETING

Classification: GE  
 Course ID: BUS204  
 Grade Level: 11, 12  
 Credits: 0.5  
 GPA Weight: 1  
 Elective: Yes  
 Fees: None  
 Length: Semester  
 Prerequisites: None

This class will provide students with an overview of the sports and entertainment field from a business and marketing perspective. Students will have an opportunity to examine basic marketing principles, and explore the multibillion dollar sports and entertainment marketing industry. Students will learn how professional athletes, sports teams, and well-known entertainers are marketed, and how many become financially successful as a result. Students will discover how things work behind the scenes of major entertainment and sporting events, at both a local and national level.

*Accounting and Financial Literacy Business course descriptions are located in the Mathematics section of this guide.*



## ENGLISH & EDUCATION

### **AMERICAN LITERATURE – ENGLISH 11**

Classification: GE  
 Course ID: ENG11  
 Grade Level: 11  
 Credits: 1  
 GPA Weight: 1  
 Elective: No  
 Fees: None  
 Length: Full Year  
 Prerequisites: None

This course covers traditional American literature, beginning with the early settlers and moving chronologically through to the Modern Era. Grammar, vocabulary, formal and informal writing, research methods, and developing a research paper are covered.

### **AP ENGLISH LANGUAGE AND COMPOSITION**

Classification: AP  
 Course ID: APENG11  
 Grade Level: 11  
 Credits: 1  
 GPA Weight: 1.2  
 Elective: No  
 Fees: \$95 exam fee  
 Length: Full Year  
 Prerequisites: B or above  
 in World Lit Honors, or  
 A- or above in  
 World Lit + instructor  
 approval

This is a writing intensive college-level course concentrating on the analysis of rhetorical and argumentation, its literary techniques, and its complexity.

Summer reading and writing assignments are required. Students taking this course are expected to take the AP exam in the spring.

### **AP ENGLISH LITERATURE AND COMPOSITION**

Classification: AP  
 Course ID: APENG12  
 Grade Level: 12  
 Credits: 1  
 GPA Weight: 1.2  
 Elective: No  
 Fees: \$95 exam fee  
 Length: Full Year  
 Prerequisites: B or above  
 in AP/DC English 11, or  
 A- or above in American  
 Lit + instructor approval

This is a writing intensive college-level course concentrating on the analysis of the uses of language, its literary techniques, and its complexity.

Summer reading and writing assignments are required. Students taking this course are expected to take the AP exam in the spring.

## BRITISH LITERATURE – ENGLISH 12

Classification: GE  
 Course ID: ENG12  
 Grade Level: 12  
 Credits: 1  
 GPA Weight: 1  
 Elective: No  
 Fees: None  
 Length: Full Year  
 Prerequisites: None

This course covers traditional British literature, beginning with the Anglo-Saxon Era and moving chronologically through to the Modern Era. Grammar, vocabulary, formal and informal writing, research methods, and developing a research paper are covered.

## COLLEGE COMPOSITION AND RESEARCH

Classification: DC  
 Course ID: LAN101  
 Grade Level: 11, 12  
 Credits: 1  
 GPA Weight: 1.1  
 Elective: No  
 Fees: \$95 (optional)  
 Length: Full Year  
 Prerequisites: B or above  
 in AP English 11, or A-  
 or above in CP English +  
 instructor approval

Students are introduced to the conventions of academic writing that will enable them to be successful writers in courses throughout their collegiate tenure. Through active engagement in the research and writing process, students will explore the power of language to shape cultural perceptions and communicate a biblical worldview.

## CREATIVE WRITING

Classification: DC  
 Course ID: LAN202  
 Grade Level: 11, 12  
 Credits: 1  
 GPA Weight: 1.1  
 Elective: Yes  
 Fees: \$95 (optional)  
 Length: Semester  
 Prerequisites: B or above  
 in previous English  
 course

This dual credit course is an introduction to the craft of creative writing. This class is designed to help students develop writing habits and skills that professional writers use. Students generate writing in the genres of fiction, poetry, and drama. In the context of a variety of genres, students will examine literary conventions, as well as the writing techniques and tools essential to effective writing and editing.

**LITERATURE SURVEY – ENGLISH 9**

Classification: GE  
 Course ID: ENG9  
 Grade Level: 9  
 Credits: 1  
 GPA Weight: 1  
 Elective: No  
 Fees: None  
 Length: Full Year  
 Prerequisites: None

A survey course of historical and contemporary literature, covering fiction, nonfiction, short stories, novels, poetry, and drama. Grammar, vocabulary, formal and informal writing, research methods, and developing a research paper are covered.

**LITERATURE SURVEY HONORS – ENGLISH 9 HONORS**

Classification: GE  
 Course ID: ENG9H  
 Grade Level: 9  
 Credits: 1  
 GPA Weight: 1.1  
 Elective: No  
 Fees: None  
 Length: Full Year  
 Prerequisites: B- or above  
 in previous English  
 Honors class, or A- or  
 above in previous English  
 class

This is a discussion and projects-based course that looks to dig deeper into the works read throughout the year. In addition to the general curriculum of the Literature Survey course, there are additional outside readings, discussion groups, projects, and writing assignments. This is a more intensive writing course with the intent of preparing students for AP English in 11<sup>th</sup> and 12<sup>th</sup> grades.

## POETRY, FICTION, DRAMA

Classification: DC  
 Course ID: LIT101  
 Grade Level: 11, 12  
 Credits: 1  
 GPA Weight: 1.1  
 Elective: No  
 Fees: \$95 (optional)  
 Length: Semester  
 Prerequisites: B or above  
 in AP/DC English 11, or  
 A- or above in CP  
 English + instructor  
 approval

This course instructs students in reading poetry, short fiction, and drama, emphasizing the critical analysis of each of these genres and the application of literary terminology. This is a college-level, writing intensive course.

## PUBLIC SPEAKING

Classification: DC  
 Course ID: LAN104  
 Grade Level: 11, 12  
 Credits: 1  
 GPA Weight: 1.1  
 Elective: Yes  
 Fees: \$95 (optional)  
 Length: Semester  
 Prerequisites: B or above  
 in previous English  
 course

This dual credit course is designed to enable students to speak effectively on selected subjects using various methods. Classroom practice is giving in oral and interpretive readings. Study is given to the correct preparation and delivery of different kinds of speeches as well as the use of correct speech habits and behavior.

## THE TEACHING PROFESSION

Classification: DC  
 Course ID: EDU101  
 Grade Level: 11, 12  
 Credits: 1  
 GPA Weight: 1.1  
 Elective: Yes  
 Fees: \$95 (optional)  
 Length: Semester  
 Prerequisites: None

This course offers an introduction to the teaching profession by examining the characteristics of an effective teacher and the professional training required for an individual to be certified. It also reviews the school environment where instruction takes place, the educational philosophies that direct the design of teaching and learning, and the legislation that has impacted education at all levels including teacher preparation. These foundational concepts are analyzed in light of a biblical worldview for education.

\*This is a dual credit course that awards elective credit towards high school graduation.

**WORLD LITERATURE – ENGLISH 10**

Classification: GE  
 Course ID: ENG10  
 Grade Level: 10  
 Credits: 1  
 GPA Weight: 1  
 Elective: No  
 Fees: None  
 Length: Full Year  
 Prerequisites: None

A survey course of historical and contemporary literature from Europe and Asia, covering fiction, nonfiction, short stories, novels, poetry, and drama. Grammar, vocabulary, formal and informal writing, research methods, and developing a research paper are covered.

**WORLD LITERATURE HONORS – ENGLISH 10 HONORS**

Classification: GE  
 Course ID: ENG10H  
 Grade Level: 10  
 Credits: 1  
 GPA Weight: 1.1  
 Elective: No  
 Fees: None  
 Length: Full Year  
 Prerequisites: B or above  
 in English 9 Honors class,  
 or A- or above in  
 English 9

This is a discussion and projects-based course that looks to dig deeper into the works read throughout the year. In addition to the general curriculum of the World Literature course, there are additional outside readings, discussion groups, projects, and writing assignments. This is a more intensive writing course with the intent of preparing students for AP/DC English in 11<sup>th</sup> and 12<sup>th</sup> grades.

**ENGLISH LANGUAGE LEARNERS****ESL**

Classification: GE  
 Course ID: ESL1  
 Grade Level: 9, 10, 11  
 Credits: 1  
 GPA Weight: 1  
 Elective: No  
 Fees: None  
 Length: Full Year  
 Prerequisites: None

English language learners discover how to use and extend their listening, reading comprehension, vocabulary, writing, and communication skills more effectively for academic purposes.

**TOEFL**

Classification: GE  
 Course ID: TOEFL1  
 Grade Level: 9, 10, 11, 12  
 Credits: 1  
 GPA Weight: 1  
 Elective: No  
 Fees: None  
 Length: Full Year  
 Prerequisites: None

TOEFL Preparation Course is designed to help students acquire the skills and confidence necessary to succeed on the TOEFL exam (TOEFL iBT).

**FINE ARTS****AP STUDIO ART: 2-D**

Classification: AP  
 Course ID: ART2D  
 Grade Level: 11, 12  
 Credits: 1  
 GPA Weight: 1.2  
 Elective: Yes  
 Fees: \$95 Exam Fee  
 Length: Full Year  
 Prerequisites: Teacher  
 Approval

This course consists of three portfolio exams. Student portfolios demonstrate skills and ideas developed, refined, and applied throughout the course to produce visual compositions.

**ART 9**

Classification: GE  
 Course ID: ART9  
 Grade Level: 9  
 Credits: 0.25  
 GPA Weight: 1  
 Elective: No  
 Fees: None  
 Length: Semester  
 Prerequisites: None

This basic art course will include the study of drawing in black and white using pencil, charcoal, pen and ink. We will use color later in relationship to the basics explored in black and white. Students will be introduced to more sophisticated concepts and techniques in printmaking, painting, and ceramics. Projects will have preparatory assignments associated with them in order to prepare students for success. These assignments are predominantly completed in class, but will require some time outside of class due to absences or speed of completion.

**ART 10**

Classification: GE  
 Course ID: ART10  
 Grade Level: 10  
 Credits: 0.25  
 GPA Weight: 1  
 Elective: Yes  
 Fees: None  
 Length: Semester  
 Prerequisites: None

This course focuses on “Ideas as Images”. Communicating through art making, and developing meaning in artwork is the emphasis. Review of previous art skills learned in Art 9 will lay the groundwork for further study of fundamentals in drawing and painting. Projects will have preparatory assignments associated with them in order to prepare students for success. These assignments are predominantly completed in class, but will require some time outside of class due to absences or speed of completion.

**CERAMICS**

Classification: GE  
 Course ID: CERM  
 Grade Level: 11, 12  
 Credits: 0.5  
 GPA Weight: 1  
 Elective: Yes  
 Fees: \$30  
 Length: Full Year  
 Prerequisites: None

This course will give students experience on the potter’s wheel and hand-building. Students will learn the proper set up, clean up, and safety regarding materials and equipment in a pottery studio. Students will learn hand-building techniques, such as coil construction, slab construction, and pinch construction. Each student will create and glaze multiple pieces. Projects will have preparatory assignments associated with them in order to prepare students for success.

**CHOIR**

Classification: GE  
 Course ID: CHOIR  
 Grade Level: 11, 12  
 Credits: 0.25  
 GPA Weight: 1  
 Elective: Yes  
 Fees: None  
 Length: Semester  
 Prerequisites: None

This course consists of learning vocal and performance techniques and applying them to selected songs. Choir members will perform at Grandparents’ Day, the Christmas concert, and Commencement.

Attendance and participation in performances are required.

**DRAWING**

Classification: GE  
 Course ID: DRAW  
 Grade Level: 11, 12  
 Credits: 0.5  
 GPA Weight: 1  
 Elective: Yes  
 Fees: None  
 Length: Full Year  
 Prerequisites: None

This course will emphasize drawing as a fundamental skill in the process of painting and will use drawing predominantly as preparation for paintings. Projects may include Still Life, Landscape, portraiture, architecture and abstract work. Projects will have preparatory assignments associated with them in order to prepare students for success. These assignments are predominantly completed in class, but will require some time outside of class due to absences or speed of completion.

**MUSIC THEORY**

Classification: GE  
 Course ID: MUSTH  
 Grade Level: 11, 12  
 Credits: 0.5  
 GPA Weight: 1  
 Elective: Yes  
 Fees: None  
 Length: Full Year  
 Prerequisites: None

This advanced music course will be tailored to the individual student's needs and talents. Each student will schedule an individual meeting with the instructor every other week to check progress and receive new assignments. Generally, each student will examine the principles of music theory as well as sight-singing, dictation, and voice leading for composition. Students will learn to analyze music and compose for a variety of instruments and voice. This course is aimed at providing a solid music theory foundation for students considering further education in music.

**THEATER**

Classification: GE  
 Course ID: THTR  
 Grade Level: 9, 10, 11, 12  
 Credits: 0.25  
 GPA Weight: 1  
 Elective: Yes  
 Fees: None  
 Length: Semester  
 Prerequisites: None

This course teaches the basics of theater performance as well as other theatrical performance components such as set building, sound, and lighting. Participants in this course are utilized during the production of the spring LC musical for hands-on application of the principals learned throughout the course.

**MATHEMATICS****ACCOUNTING**

Classification: GE  
 Course ID: ACCT  
 Grade Level: 11, 12  
 Credits: 0.5  
 GPA Weight: 1  
 Elective: No  
 Fees: None  
 Length: Semester  
 Prerequisites: None

This course serves as an introduction to the basic concepts and standards underlying financial accounting systems. Several important concepts will be studied in detail, including: revenue recognition, inventory, long-term assets, long-term liabilities, and present value.

Basic Calculator is Required.



**ALGEBRA 1**

Classification: GE  
 Course ID: ALG1-CP  
 Grade Level: 9  
 Credits: 1  
 GPA Weight: 1  
 Elective: No  
 Fees: None  
 Length: Full Year  
 Prerequisites: None

This course includes concepts typically taught in college-prep Algebra and includes real-world applications. This course covers topics such as equations with more than one variable, inequalities, factoring, rational expressions, relations, radicals, and linear and non-linear functions.

TI-83 or TI-84 Graphing Calculator is Required.

**ALGEBRA 2**

Classification: GE  
 Course ID: ALG2  
 Grade Level: 10, 11, 12  
 Credits: 1  
 GPA Weight: 1  
 Elective: No  
 Fees: None  
 Length: Full Year  
 Prerequisites: Algebra 1

This course will prepare students for pre-calculus concepts. Topics include equations and inequalities, linear relations and functions, quadratic functions, polynomial functions, radicals, rational expressions, and conic sections.

TI-83 or TI-84 Graphing Calculator is Required.

**ALGEBRA 2 HONORS**

Classification: GE  
 Course ID: ALG2-H  
 Grade Level: 10, 11, 12  
 Credits: 1  
 GPA Weight: 1  
 Elective: No  
 Fees: None  
 Length: Full Year  
 Prerequisites: B- or above  
 in Algebra 1 Honors, or  
 A- or above in Algebra 1

This course covers equations, inequalities, quadratic functions, polynomial functions, radicals, rational functions, exponential functions, logarithmic functions, conic sections, and trigonometry as a means of analyzing and understanding a broad variety of relationships, helping them better understand the structure of Algebra.

TI-83 or TI-84 Graphing Calculator is Required.

**AP CALCULUS**

Classification: AP  
 Course ID: APCAL  
 Grade Level: 11, 12  
 Credits: 1  
 GPA Weight: 1.2  
 Elective: No  
 Fees: \$95 exam fee  
 Length: Full Year  
 Prerequisites: Pre-Calc  
 Honors or 90% or above  
 in Pre-Calc

Topics of study include limits, continuity, differentiation, and integration. Applications of the derivative and the integral will be explored. Students will be prepared to take the AP Calculus AB exam in the spring.

TI-83 or TI-84 Graphing Calculator is Required.

**CALCULUS**

Classification: GE  
 Course ID: CALC  
 Grade Level: 11, 12  
 Credits: 0.5  
 GPA Weight: 1  
 Elective: No  
 Fees: None  
 Length: Semester  
 Prerequisites: C- or above  
 in Pre-Calc

The major topics presented are limits, derivatives, and integrals. This course is for students who might, at some point, take a Calculus course in college.

TI-83 or TI-84 Graphing Calculator is Required.

**FINANCIAL LITERACY**

Classification: GE  
 Course ID: FINLI  
 Grade Level: 10, 11, 12  
 Credits: 1  
 GPA Weight: 1  
 Elective: No  
 Fees: None  
 Length: Full Year  
 Prerequisites: None

This course provides comprehensive classroom experiences that allow students to develop the knowledge and skills needed to make informed decisions as a consumer. Students will develop the financial skills related to income, taxes, financial planning, banking, consumer credit, budgeting, savings and investment, and insurance. Guest Speakers will be integrated into learning experiences, as well as Dave Ramsey's Foundations in Personal Finance (High School Edition) in order to better apply Biblical principles to personal money management.

Basic Calculator is Required.

**GEOMETRY**

Classification: GE  
 Course ID: GEOM  
 Grade Level: 9, 10  
 Credits: 1  
 GPA Weight: 1  
 Elective: No  
 Fees: None  
 Length: Full Year  
 Prerequisites: None

This course emphasizes visual and tactile representations of math concepts to enhance retention of concepts taught. Topics covered include segment measurement, parallel lines and angle relationships, properties of triangles and quadrilaterals, equations of lines, proportions, area, volume, and surface area.

TI-83 or TI-84 Graphing Calculator is Required.

## GEOMETRY HONORS

Classification: GE  
 Course ID: GEOM-H  
 Grade Level: 9, 10  
 Credits: 1  
 GPA Weight: 1  
 Elective: No  
 Fees: None  
 Length: Full Year  
 Prerequisites: B- or above  
 in Algebra 1 Honors, or  
 A- or above in Algebra 1

Topics include deductive reasoning and proof, parallel and perpendicular lines, congruent triangles, quadrilaterals, proportions and similarity, right triangles, trigonometry transformations, circles, area and volume. Students will be taught to reason deductively and to prove theorems in Geometry.

TI-83 or TI-84 Graphing Calculator is Required.

## PRE-CALCULUS & TRIGONOMETRY

Classification: GE  
 Course ID: PRECAL  
 Grade Level: 11, 12  
 Credits: 1  
 GPA Weight: 1  
 Elective: No  
 Fees: None  
 Length: Full Year  
 Prerequisites: Algebra 2

This course integrates concepts and skills relating to foundation, two-dimensional calculus, such as the concept of critical points and end behavior, function analysis, trigonometry, polynomial and rational functions, conics, exponential and logarithmic functions, and geometry. Real-world examples will be used throughout the course and will demonstrate how pre-calculus is utilized in crime/accident investigation, business, and other disciplines.

TI-83 or TI-84 Graphing Calculator is Required.

## PRE-CALCULUS & TRIGONOMETRY HONORS

Classification: GE  
 Course ID: PRECAL-H  
 Grade Level: 11, 12  
 Credits: 1  
 GPA Weight: 1.1  
 Elective: No  
 Fees: None  
 Length: Full Year  
 Prerequisites: B- or above  
 in Algebra 2 Honors, or  
 A- or above in Algebra 2

This course prepares students to take AP Calculus. Advanced Algebra topics include: linear relations and functions, systems of equations and inequalities, graphing, polynomial and rational functions, conics, and exponential and logarithmic functions. Topics in Trigonometry include: trigonometric functions, graphing, and proving trigonometric identities, vectors, and parametric equations, and polar coordinates.

TI-83 or TI-84 Graphing Calculator is Required.

## STATISTICS

Classification: GE  
 Course ID: STAT  
 Grade Level: 11, 12  
 Credits: 0.5  
 GPA Weight: 1  
 Elective: No  
 Fees: None  
 Length: Semester  
 Prerequisites: C- or above  
 in Algebra 2

The purpose of this course is to teach students how to make informed decisions using data. Students will collect data, organize and summarize it, find relationships between two variables, find probability, create and interpret probability distributions and sampling distributions.

TI-83 or TI-84 Graphing Calculator is Required.

## PHYSICAL EDUCATION, HEALTH AND WELLNESS

### HEALTH

Classification: GE  
 Course ID: HEA1  
 Grade Level: 11  
 Credits: 0.5  
 GPA Weight: 1  
 Elective: No  
 Fees: None  
 Length: Full Year  
 Prerequisites: None

This course is broken down into 3 areas of study. The 1<sup>st</sup> area will focus on mental health and will culminate with each student researching a mental health disorder that they will present to the class. The 2<sup>nd</sup> and 3<sup>rd</sup> grading quarters will focus on physical health and practical applications to take care of your body. The 3<sup>rd</sup> area of study will focus on social and emotional health. Each aspect of study will bring in a biblical perspective in analyzing the human body. There will also be a spiritual health unit that will address our spiritual gifts and how we use them as part of the Body of Christ and how we can use the health care field as a ministry.

### PHYSICAL EDUCATION

Classification: GE  
 Course ID: PE9, PE10,  
 PE11, PE12  
 Grade Level: 9, 10, 12  
 Credits: 0.25  
 GPA Weight: 1  
 Elective: No  
 Fees: None  
 Length: Full Year  
 Prerequisites: None

Physical Education is a phase of education concerned with the developing of physical skills, acquiring sports knowledge, and encouraging sportsmanship. This class will focus on improvement of the student's fitness level in the areas of agility, strength, flexibility, and endurance. Emphasis will be on team sports, but as students advance in physical education, the primary focus will be on individual sports and lifetime fitness. The student will learn the rules and fundamentals of various games and will acquire skills that can be carried over into adult life.

## SCIENCE

### **ANATOMY & PHYSIOLOGY**

Classification: GE  
 Course ID: ANAT1  
 Grade Level: 11, 12  
 Credits: 1  
 GPA Weight: 1  
 Elective: No  
 Fees: None  
 Length: Full Year  
 Prerequisites: C or above  
 in Biology & Chemistry

Human Anatomy and Physiology is a Biology course that investigates the relationships between the structures and functions of the human body systems. The structural study focuses on the basic anatomical terminology, the identification of human organs and systems. The functional study examines the physical, mechanical and biochemical function of the human body. It explores the great details of each of the major systems of the body and how they work together in unity. Topics covered include the basic organization of the body, biochemical composition, cellular processes, organ systems and the body as a whole. In addition, it examines common pathologies as they relate to the body structural arrangements and functional operations. Students will learn through group activities, interactive lectures, anatomical models, laboratory activities, reading materials, research projects, and dissections. Students will gain an understanding and appreciation for the human body – God’s masterpiece.

### **ASTRONOMY**

Classification: GE  
 Course ID: ASTRO  
 Grade Level: 11, 12  
 Credits: 0.5  
 GPA Weight: 1  
 Elective: Yes  
 Fees: None  
 Length: Semester  
 Prerequisites: None

Introduction to the universe, with emphasis on conceptual, as contrasted with mathematical, comprehension. Modern theories, observations; ideas concerning nature, evolution of galaxies; quasars, stars, black holes, planets, solar system. Emphasis on mathematical and physical comprehension of nature, the sun, stars, galaxies, and cosmology.

### **BIOLOGY**

Classification: GE  
 Course ID: BIO9  
 Grade Level: 9, 10  
 Credits: 1  
 GPA Weight: 1  
 Elective: No  
 Fees: None  
 Length: Full Year  
 Prerequisites: None

Biology is the study of life, God’s living creation. The student will develop knowledge of basic biological terms and fundamental principles of biology, with an emphasis on human anatomy and physiology. Each student will be equipped to defend scientific creationism as well as to constructively criticize the evolutionary model.

## BIOLOGY HONORS

Classification: GE  
 Course ID: BIO9H  
 Grade Level: 9, 10  
 Credits: 1  
 GPA Weight: 1.1  
 Elective: No  
 Fees: None  
 Length: Full Year  
 Prerequisites: B- or above  
 in previous Science  
 courses

Biology is the study of life, God's living creation. This course introduces foundational concepts of biology, including the study of the basic chemistry of life, the cell, the molecular basis of heredity, genetics, ecology, and animals. Students will be exposed to secular views and biblical principles regarding life's origin and development in the unit of study on evolution. Students will be equipped to defend scientific creationism as well as to constructively criticize the evolutionary model. Throughout the course, students will be prompted to think critically about the issue of bioethics. Biology as a career will also be discussed. Students learn through inquiry activities, laboratory work, group activities, independent reading, interactive lectures, and research and presentation projects. This course requires additional time for independent research studies and in-depth study of concepts. This course is for students pursuing a 4-year college education.

## CHEMISTRY

Classification: GE  
 Course ID: CHEM1  
 Grade Level: 10, 11  
 Credits: 1  
 GPA Weight: 1  
 Elective: No  
 Fees: None  
 Length: Full Year  
 Prerequisites: Algebra

Chemistry is also called the "General Science" as it plays an important role in connecting other fields of science including physics, astronomy, biology, and geology, to fields of study including medicine, engineering, and material sciences. This course investigates the nature and structure of matter, including the fundamental properties of elements, compounds, and mixtures. Chemical processes and reactions are observed and tested to understand how different parts of matter are united to form substances that exist in nature as well as the causes that alter their states. Students will learn through inquiry activities, group activities, laboratory experimentation, reading materials, interactive lectures, demonstration and problem solving. Students will be able to make practical application of chemical principles to many areas of life and be in awe of God's creation.

## CHEMISTRY HONORS

Classification: GE  
 Course ID: CHEM1H  
 Grade Level: 10, 11  
 Credits: 1  
 GPA Weight: 1.1  
 Elective: No  
 Fees: None  
 Length: Full Year  
 Prerequisites: B or above  
 in Biology, Algebra 1

Chemistry is also called the "General Science" as it plays an important role in connecting other fields of science including physics, astronomy, biology, and geology, to fields of study including medicine, engineering, and material sciences. This course investigates the nature and structure of matter, including the fundamental properties of elements, compounds, and mixtures. Chemical processes and reactions are observed and tested to understand how different parts of matter are united to form substances that exist in nature as well as the causes that alter their states. Students will learn through inquiry activities, group activities, laboratory experimentation, reading materials, interactive lectures, demonstration and problem solving. Students will be able to make practical application of chemical principles to many areas of life and be in awe of God's creation. This course requires additional time for independent research studies and in-depth study of concepts. This course is for students pursuing a 4-year college education.

## ENVIRONMENTAL SCIENCE

Classification: GE  
 Course ID: ENVO101  
 Grade Level: 11, 12  
 Credits: 1  
 GPA Weight: 1  
 Elective: No  
 Fees: None  
 Length: Full Year  
 Prerequisites: D or above  
 in Biology & Chemistry

Environmental Science is an interdisciplinary field of study that integrates a variety of science disciplines including biology, chemistry, and physics. It is the study of processes and patterns in the natural world and how human activities alter them. This course will introduce basic concepts of ecology, earth systems and resources, energy resources and consumption, population, pollution, global changes as well as encourage the student to think through environmental issues. Students will gain insight into how we can take part in being good stewards of God's creation. This class will scientifically analyze the natural world through critical thinking skills, group discussions, independent readings, interactive lectures, research projects and presentations. There will be an emphasis on hands-on activities, laboratory exercises and collaborative inquiry learning that will promote problem solving and analytical thinking skills. Case studies and outdoor field studies will be an integrated part of the class to further enhance the learning experience.

## FORENSICS

Classification: GE  
 Course ID: FORSCI  
 Grade Level: 11, 12  
 Credits: 0.5  
 GPA Weight: 1  
 Elective: Yes  
 Fees: None  
 Length: Semester  
 Prerequisites: None

Forensic Science is the application of science (chemistry, physics, and biology) to the criminal and civil laws that are enforced by police agencies in a criminal justice system. It includes the investigation of fingerprinting, fiber analysis, ballistics, arson, trace evidence analysis, poisons, drugs, blood spatters, and blood samples. Students are taught the proper collection, preservation, and laboratory analysis of various samples.

## INTRO TO PSYCHOLOGY

Classification: GE  
 Course ID: PSY101  
 Grade Level: 12  
 Credits: 0.5  
 GPA Weight: 1  
 Elective: No  
 Fees: None  
 Length: Full Year  
 Prerequisites: None

Examination and application of major principles of psychology including: biological foundations, sensation and perception, learning and conditioning, human development, motivation and emotion, thinking, memory and intelligence, personality theories, stress and coping, social psychology, psychological disorders and their treatment.

## PHYSICAL SCIENCE

Classification: GE  
 Course ID: TBD  
 Grade Level: 9  
 Credits: 1  
 GPA Weight: 1  
 Elective: No  
 Fees: None  
 Length: Full Year  
 Prerequisites: None

The Physical Science curriculum is designed to continue student investigations of the physical sciences that began in grades K-8 and provide students with the necessary skills to have a richer knowledge base in physical science. This course is designed as a survey course of chemistry and physics. This curriculum includes the more abstract concepts such as the conceptualization of the structure of atoms, motion and forces, and the conservation of energy and matter, the action/reaction principle, and wave behavior. Students investigate physical science concepts through experience in laboratories and field work using the processes of inquiry.

## PHYSICS

Classification: GE  
 Course ID: PHYS  
 Grade Level: 11, 12  
 Credits: 1  
 GPA Weight: 1  
 Elective: No  
 Fees: None  
 Length: Full Year  
 Prerequisites: B or above  
 in Chemistry and  
 Algebra 2. Pre-Calculus is  
 Preferred.

Students will become aware of the mathematical principles found in a world created by God. Students will study one- and two-dimensional motion, vectors forces, work, energy, momentum, collisions, gravitation, fluid mechanics, heat, thermodynamics, vibrations, waves, sound, light, electricity, and magnetism. Students will learn problem solving techniques that will prepare them for their college level physics class. These modelling and analysis techniques are not only valuable for the sciences, but for life's challenges as well. Laboratory experiences, hands-on demonstrations, and a variety of projects will be used to verify principles of physics learned.

## SOCIAL STUDIES

### AMERICAN GOVERNMENT

Classification: GE  
 Course ID: GOV12  
 Grade Level: 11, 12  
 Credits: 0.5  
 GPA Weight: 1  
 Elective: No  
 Fees: None  
 Length: Semester  
 Prerequisites: None

This survey of American Government will acquaint the students with the basics of American politics. The course will include a comparative study of political systems, as well as consideration of the uniqueness of the American Republic, civil rights and responsibilities, the party system, the three branches of government, and the American electoral process. It will stress the importance of the Constitution and the events that led to its creation. Special consideration will also be given to current events.



## ANCIENT CIVILIZATIONS

Classification: GE  
 Course ID: HIST9  
 Grade Level: 9  
 Credits: 1  
 GPA Weight: 1  
 Elective: No  
 Fees: None  
 Length: Full Year  
 Prerequisites: None

Ancient Civilizations begins with creation and continues through early civilizations, the development of empires, the Ancient Greeks and Romans, the Kingdoms of Africa, great civilizations in India and China, Islamic Civilizations and Empires, and the Rise of Medieval Europe. Students will read both primary and secondary sources and will participate in class discussions, historical inquiry, and group and individual presentations. Our historical study will seek to link ancient history themes to modern American and global developments, always filtered through a biblical worldview.

## CIVIL WAR AND RECONSTRUCTION

Classification: GE  
 Course ID: CIVWAR  
 Grade Level: 11, 12  
 Credits: 0.5  
 GPA Weight: 1  
 Elective: Yes  
 Fees: None  
 Length: Full Year  
 Prerequisites: None

This course will study in detail the causes, progression, and aftermath of the U.S. Civil War and the Reconstruction period. While a significant portion of this course will examine battles and battlefield technology, the major focus of this course will be on the human element. People are driven by ideas, and the Civil War was the greatest struggle of ideas this nation has ever known. Course components will include reading, class discussion, writing essays, and lectures.

## GLOBAL PERSPECTIVES

Classification: GE  
 Course ID: GLPR12  
 Grade Level: 11, 12  
 Credits: 0.5  
 GPA Weight: 1  
 Elective: No  
 Fees: None  
 Length: Semester  
 Prerequisites: None

Global Perspectives is a diverse course designed to address several topics of global significance. The course is taught through a thematic approach in that the curriculum will address the interdependence and impact nations have on each other. Areas of consideration are geography, demography, food, energy, environment, human rights and terrorism. Additionally, students will examine these themes as they played out over the last 30 years of world history and will apply these themes to their analysis of current events. This is a discussion-intensive course in which students examine the long-reaching implications of international policy and the role Christianity (and the student as an individual) plays on the world stage.

## INTRODUCTION TO AMERICAN GOVERNMENT

Classification: DC  
 Course ID: POL202  
 Grade Level: 11, 12  
 Credits: 1  
 GPA Weight: 1.1  
 Elective: No  
 Fees: \$95 (optional)  
 Length: Semester  
 Prerequisites: C or above  
 in previous History  
 course

This course includes both the study of general concepts used to interpret U.S. politics and the analysis of specific examples. It also requires familiarity with the various institutions, groups, beliefs, and ideas that constitute U.S. politics. Students will become acquainted with a variety of theoretical perspectives and explanations for various behaviors and outcomes. Current political, legal, and government issues will be used to illustrate major points and refine the student's understanding. Students will be expected to write essays and provide current events presentations that demonstrate their understanding of various course concepts.

## **INTRODUCTION TO PHILOSOPHY**

Classification: GE  
 Course ID: PHI201  
 Grade Level: 11, 12  
 Credits: 0.5  
 GPA Weight: 1  
 Elective: Yes  
 Fees: None  
 Length: Semester  
 Prerequisites: None

This course is an introduction to the major classical problems contextualizing issues in philosophy and the relevance of these to the Christian faith. It will focus on major philosophical arguments within various worldviews and subsequently analyze them in light of a biblical worldview.

## **U.S. HISTORY SURVEY**

Classification: GE  
 Course ID: HIST11  
 Grade Level: 11  
 Credits: 1  
 GPA Weight: 1  
 Elective: No  
 Fees: None  
 Length: Full Year  
 Prerequisites: None

This survey of the U.S. begins with the early explorers and settlers and continues through the end of the Cold War. Topics for the course include colonization, the American Revolution, westward expansion, the Civil War, Industrialization, Progressivism, World War I, the 1920's, the Great Depression and the New Deal, World War II, the Post-War World, Equality and Social Reform, the Vietnam War, and modern presidencies. Contemporary and historical issues will be discussed in the light of a Christian worldview.

## **WORLD HISTORY**

Classification: GE  
 Course ID: HIST10  
 Grade Level: 10  
 Credits: 1  
 GPA Weight: 1  
 Elective: No  
 Fees: None  
 Length: Full Year  
 Prerequisites: None

This course examines the many varied societies of the world by focusing on cultural developments from 1500 to present. Included in the study are the geography, history, economics and political institutions of Africa, Asia, Latin America and Europe. While the textbook continues to be the primary resource, students will gain additional experience with primary documents and other research materials when examining each topic. Assessments involving assisted and independent reading, research and writing will be incorporated into the curriculum.

## TECHNOLOGY EDUCATION

### **AP COMPUTER SCIENCE**

Classification: AP  
 Course ID: APCS  
 Grade Level: 11, 12  
 Credits: 1  
 GPA Weight: 1.2  
 Elective: Yes  
 Fees: \$95 exam fee  
 Length: Full Year  
 Prerequisites: Instructor  
 Approval

This course emphasizes object-oriented programming methodology with an emphasis on problem solving and algorithm development, and is meant to be the equivalent of a first-semester college course in computer science. It also includes the study of data structures and abstraction.

Students taking this course are expected to take the AP exam in the spring.

### **AP COMPUTER SCIENCE PRINCIPLES**

Classification: AP  
 Course ID: APCSP  
 Grade Level: 11, 12  
 Credits: 1  
 GPA Weight: 1.2  
 Elective: Yes  
 Fees: \$95 exam fee  
 Length: Full Year  
 Prerequisites: Instructor  
 Approval

This course introduces students to the foundational concepts of computer science and challenges them to explore how computing and technology can impact the world. The AP Program designed AP Computer Science Principles with the goal of creating leaders in computer science fields, attracting and engaging those who are traditionally underrepresented with essential computing tools and multidisciplinary opportunities.

Students taking this course are expected to take the AP exam in the spring.

### **DIGITAL DESIGN**

Classification: GE  
 Course ID: COMP10  
 Grade Level: 10  
 Credits: 0.5  
 GPA Weight: 1  
 Elective: No  
 Fees: None  
 Length: Semester  
 Prerequisites: None

In this course, students will learn skills necessary for enhancing and altering digital photographs. Projects will include merging, blending, and layering images. These skills will then be applied in the desktop publishing phase of the course. Projects will be designed to incorporate student graphics and images.

Access to a digital camera is helpful, but not required.

**COMPUTER SURVEY**

Classification: GE  
 Course ID: COMP09  
 Grade Level: 9  
 Credits: 1  
 GPA Weight: 1  
 Elective: No  
 Fees: None  
 Length: Full Year  
 Prerequisites: None

This course is a survey of computer programming and processing. Students will engage in logical thinking skills and algorithm design skills necessary for computer programming. Students will also take an overview look at the field of cybersecurity and the necessity for securing sensitive data.

**WEB DESIGN**

Classification: GE  
 Course ID: WEBDE  
 Grade Level: 11, 12  
 Credits: 0.5  
 GPA Weight: 1  
 Elective: Yes  
 Fees: None  
 Length: Semester  
 Prerequisites: None

This course focuses on the development and design of web pages using HTML and CSS. Students will learn to use HTML tags in the design and publishing of web pages. In the second semester, this course focuses on learning Adobe Dreamweaver CSS tools to author web pages. Students will design and publish internal web pages.

**YEARBOOK**

Classification: GE  
 Course ID: YRBK  
 Grade Level: 9, 10, 11, 12  
 Credits: 0.5  
 GPA Weight: 1  
 Elective: Yes  
 Fees: None  
 Length: Full Year  
 Prerequisites: None

In this class, students learn business and creative skills to produce the school yearbook. Yearbook staffers are required to spend time outside of class taking photos, conducting interviews, and completing yearbook assignments. Skills acquired in yearbook include time management, communication, technology, creativity and collaboration.

Commitment to excellence, a strong work ethic, and follow-through are requirements for this course.

## WORLD LANGUAGES

### **FRENCH 1**

Classification: GE  
 Course ID: TBD  
 Grade Level: 9  
 Credits: 1  
 GPA Weight: 1  
 Elective: No  
 Fees: None  
 Length: Full Year  
 Prerequisites: None

The overall objectives of the French 1 course are to develop, reinforce, and refine proficiency in the three modes of communication. Through an essentially inductive approach, students will gain an understanding of how the language is structured and how they can use this knowledge to express their own needs and talk about the world around them. By developing and refining their skills of observation, students also acquire a basic understanding and appreciation of the diversity of cultures in the French - speaking world.

### **FRENCH 2**

Classification: GE  
 Course ID: TBD  
 Grade Level: 10  
 Credits: 1  
 GPA Weight: 1  
 Elective: No  
 Fees: None  
 Length: Full Year  
 Prerequisites: None

French II continues to develop basic concepts in French language and culture including French pronunciation, grammar, and culture. Students will enhance and further develop their use of French a balanced development of all four skills: listening, speaking, reading, and writing. The importance of communication and cultural awareness is stressed through a wide variety of activities (group/pair work, video, audio recordings, computer assignments, etc.). This course is designed for students with one year of study of French language and culture to meet the Pennsylvania State Standards by further developing the four basic language competencies (reading, writing, speaking, and listening).

### **SPANISH 1**

Classification: GE  
 Course ID: SPAN1  
 Grade Level: 9  
 Credits: 1  
 GPA Weight: 1  
 Elective: No  
 Fees: None  
 Length: Full Year  
 Prerequisites: None

Introductory oral and written activities encourage the student to begin feeling at ease and competent with Spanish pronunciation and vocabulary. Subsequent textbook, written, and oral work is designed to help students understand basic sentence structure, build vocabulary, and use these abilities for oral and written expression and comprehension. A major goal of first-year grammar is the mastery of the present tense in appropriate vocabulary contexts, including all regular, and a few irregular, verbs, present + infinitive forms, and question words as a basis for speaking, reading, writing, and listening abilities.

**SPANISH 2**

Classification: GE  
 Course ID: SPAN2  
 Grade Level: 10  
 Credits: 1  
 GPA Weight: 1  
 Elective: No  
 Fees: None  
 Length: Full Year  
 Prerequisites: None

After a review of the present tense and vocabulary, students will expand their knowledge of Spanish through the study of stem-changing present tense verbs, commands, and making comparisons as well as an introduction to the preterit tense. More advanced vocabulary, oral activities, and work on sentence structure in appropriate vocabulary contexts will help the student improve conversation, reading, writing, and listening skills. Spanish-only partner projects and Internet-assisted activities will be emphasized to facilitate further Spanish immersion. The student transitions to using Spanish as a tool rather than solely a grammatical study, which facilitates discussions in Spanish and easily builds vocabulary.

**SPANISH 3**

Classification: GE  
 Course ID: SPAN3  
 Grade Level: 11  
 Credits: 1  
 GPA Weight: 1  
 Elective: Yes  
 Fees: None  
 Length: Full Year  
 Prerequisites: C or above  
 in Spanish 2

This course begins as a partial immersion class, leading to total immersion the 2<sup>nd</sup> half of the year. After a grammar review, students continue to build their vocabulary, writing, reading, listening, and speaking abilities. Students learn how to utilize the preterit and imperfect simultaneously as well as direct object pronouns, reflexive verbs, and the present progressive. Spanish-only partner projects and Internet-assisted activities will be emphasized to facilitate further Spanish immersion. Classroom discussions and written exams will use as much Spanish as possible. Students also begin to develop an advanced appreciation for the Spanish-speaking world through interactive group projects, music, geographical study, and cultural lessons.

**SPANISH LANGUAGE AND CULTURES**

Classification: GE  
 Course ID: SPAN-LAN  
 Grade Level: 12  
 Credits: 1  
 GPA Weight: 1  
 Elective: Yes  
 Fees: None  
 Length: Full Year  
 Prerequisites: C or above  
 in Spanish 3

Spanish Language and Cultures will provide language students with an opportunity to continue their exploration of the Spanish language with an emphasis placed on written and oral expression. Students will review and utilize grammatical concepts from previous Spanish language levels to perfect their oral expression on a variety of topics in the target language. Students will also explore classical works of literature (Don Quijote de la Mancha & Lazarillo de Tormes) as well as current events from Spanish-speaking countries. Specifically, as students prepare to travel to Guatemala, we will complete an overview of Guatemalan history and culture as well as prepare to share their testimonies and the gospel in Spanish. This course is a total immersion course.

## ADDITIONAL COURSES

### **CTC HALF-DAY**

Classification: GE  
 Course ID: CTC-Half  
 Grade Level: 11, 12  
 Credits: 3  
 GPA Weight: 1  
 Elective: No  
 Fees: None  
 Length: Full Year  
 Prerequisites: None

This course is typically completed during the 11<sup>th</sup> grade, and will meet credits required for graduation. See the Career and Technology Center section of this guide for program options.

### **CTC FULL-DAY**

Classification: GE  
 Course ID: CTC-Full  
 Grade Level: 12  
 Credits: 6.5  
 GPA Weight: 1  
 Elective: No  
 Fees: None  
 Length: Full Year  
 Prerequisites: None

This course is typically completed during the 12<sup>th</sup> grade, and will meet credits required for graduation. See the Career and Technology Center section of this guide for program options.

### **SENIOR PROJECT**

Classification: GE  
 Course ID: SENPRO  
 Grade Level: 12  
 Credits: 0.25  
 GPA Weight: 1  
 Elective: No  
 Fees: None  
 Length: Full Year  
 Prerequisites: None

This course offers time to prepare for Senior Trip, provides resources and study in preparation for Senior Project, and allows students to meet with their SenPro advisors throughout the year in preparation for their SenPro Presentations and Defense.

This course is a graduation requirement.

## CONTACT INFORMATION

Ryan McCracken  
High School Principal  
[ryan.mccracken@lcstaff.net](mailto:ryan.mccracken@lcstaff.net)

Lori Casanova  
IU13 School Counselor  
CTC and Student Support  
[lori.casanova@lcstaff.net](mailto:lori.casanova@lcstaff.net)

Ross McCracken  
High School Counselor  
Internships and Transcripts  
[ross.mccracken@lcstaff.net](mailto:ross.mccracken@lcstaff.net)

Erin Chaboya  
Academics and Curriculum  
Course Selection and Post-Secondary Planning  
[erin.chaboya@lcstaff.net](mailto:erin.chaboya@lcstaff.net)